

Annual Report 2018

IPIS vzw



Contents

From the Chair.....	3
Preface	4
Board of Directors	5
Activity report	
Research Programme: Natural Resources	7
Research Programme: Conflict Mapping	14
Research Programme: Arms Trade/Security	19
Research Programme: Business & Human Rights	22
Research Programme: Capacity Enhancement	24
New maps	28
About IPIS	
Mission Statement	30
Finances	32
Networks and platforms.....	33
Outreach	35
Assignments 2016-2017-2018.....	40
IPIS team	46
Contact	47

Central African Republic, alluvial diamond worker Nandobo



From the Chair

Antwerp, June 2019

In this second year of our five year strategic plan (2017-2021), IPIS focused on the continuation of research and capacity enhancement operations in DR Congo, Tanzania, and the Central African Republic. The work was executed in collaborative spirit with our partners on the ground, and backed by support from a growing spectrum of governmental donors, international organisations, and peace building NGOs. With the conflict-development nexus at its core, our activities contributed to improve understanding of armed conflict and its drivers, with a particular emphasis on artisanal mining.

2018 was also a year where IPIS had an increasing high-level engagement with the private sector. We were proud that the Federal Institute for Sustainable Development selected our consortium with the University of Antwerp to develop a Toolbox on Business & Human Rights, that has the potential to have international reach. While we remain critical observers to the private sector engagement in responsible sourcing of natural resources from sub-Saharan Africa, we witnessed the further development of interesting dynamics with private entities in the principal multi-stakeholder

platforms where IPIS is present, the European Platform for Responsible Minerals and the Public-Private Alliance on Responsible Minerals Trade. Furthermore, through the Kimberley Process Civil Society Coalition, I observed joint initiatives with the World Diamond Council to support the much needed reform of the certification mechanism.

Over the last year, our organisation experienced the appreciation of our stakeholders and partners, but also some challenges. It was a difficult financial year, with several uncertainties in donor engagement. In that regard, we particularly welcomed the start of a three-year grant from the European Commission, Instrument contributing to Stability and Peace, that will enable us to further develop our research, and the related activities to strengthen our African partners.

In conclusion, I would like to thank my fellow Board members for their commitment to good governance over the last year, and the IPIS staff for delivering high quality throughout, as always in a cordial and collaborative spirit. I look forward to the continuation of our mission in 2019.



Preface

Looking back to 2018, we witnessed how IPIS could build on the foundations of the past years, deploying its research activities in the Democratic Republic of Congo, the Central African Republic, and Tanzania. IPIS worked closely with civil society organizations, governmental actors, and the private sector to contribute to durable peace, sustainable development, and the observance of human rights.

In DR Congo, IPIS remained a central rally point for rare data on militarization of artisanal mines. IPIS increasingly took up a role in the independent monitoring of responsible sourcing initiatives and its effects in eastern DR Congo, backed by multiple governmental donors and private sector initiatives. IPIS also developed a new incident reporting tool 'Kufatilia' that will see further implementation in 2019.

On the Central African Republic (CAR), IPIS published an extensive update of its map and report on the armed conflict, breaking down specific conflict drivers such as road predation, violence related to pastoralism, and conflict minerals. At the closing of the year, we witnessed the start of two solid follow-up research projects on pastoralism and mining in CAR, to contribute to peace building and conflict prevention initiatives.

This year we also had the opportunity to further develop the program on Business & Human Rights, both in Tanzania, in close cooperation with the Commission for Human Rights and Good Governance (CHRAGG), and in Belgium, where IPIS entered a partnership with the University of Antwerp to develop an online toolbox on Business & Human Rights for the Belgian Federal Institute of Sustainable Development.

Over the last years, IPIS has been facing a continued challenge in acquiring the necessary funds to sustain its program on arms trade. With limited means, we have focused on the production of several informative maps, and on exploring technological solutions to support measures against diversion of arms.

IPIS remained an active member of prominent multi-stakeholder initiatives committed to responsible sourcing. The key networks for IPIS were the European Partnership for Responsible Minerals, of which it is a co-founder, the Public-Private Alliance for Responsible Minerals Trade, and the Kimberley Process. In the latter, IPIS remained engaged in the Civil Society Coalition, where it supports the African members in their efforts to ensure that diamond export and trade is beneficial to the mining communities, and not tainted by armed violence and human rights violations.

Throughout these activities, IPIS tried to work with civil society partners from the perspective of the communities affected by armed conflict and human rights violations. As a research institute, it remains critical of top-down solutions, and does not hesitate to report adverse effects of often well-intended initiatives. IPIS will continue working with this approach in 2019.

Board of Directors

Mandates in the Board of Directors are unsalaried. On 01/01/2018, the Board was composed of the following persons:

Chair

Johan Swinnen, Honorary Ambassador, Former Belgian Ambassador to DR Congo (2004-2008).

Secretary

Tom Sauer, Professor International Politics at the University of Antwerp, Department of Political Science.

Treasurer

Erik Devogelaere, Manager of Finance and institutional Fundraising at Rikolto.

Members

Jean Reynaert, former Director of the Belgian/Flemish ngo federation and former programme coordinator of 11.11.11, the coalition of ngo's, unions, movements and various solidarity groups in Flanders.

Dirk Timmermans, Board Member of the Peace Center (Antwerp), Educational Advisor - Coordinator, Chair of the UN Association workgroup Education

Cathy Suykens, Project Manager for the Cyber Security Coalition vzw/ asbl

Jan Pollet, Political Affairs Officer of the Belgian/Flemish Section of Amnesty International.

Tomas Baum, Founding Director of the Flemish Peace Institute 2006-2018

Saartje Boutsen, Advisor Environment & Sustainable Business at the Flemish Chamber of Commerce



Mine site in Serengeti district, Mara region, Tanzania

Activity report

Research Programmes

Natural Resources

Human rights in mining in Northwest Tanzania

Mapping the socio-economic and human rights impact of mining in northwest Tanzania

Since January 2017, IPIS has been working on a project to map the socio-economic and human rights impact of mining in northwest Tanzania. Funded by the Belgian Development Cooperation as part of a program on Human Rights and Digitalisation, the project uses digital technologies to bridge information gaps around mining in Tanzania. This is done according to a two-pronged approach.

Firstly, IPIS has undertaken a broad mobile survey on the socio-economic and human rights impact of both small and large-scale mining. On small-scale mining, IPIS has surveyed around 450 mining and processing sites in northwest Tanzania. This data was published in the form of a report, interactive webmap and open database. On large-scale mining, IPIS surveyed all communities around 6 selected mines in northwest Tanzania on their perceptions regarding the impact of these operations. The findings of this data collection will be published in the coming months.

Secondly, IPIS is piloting a mobile incident detection mechanism. A selected number of trained key informants in the 4 focal regions can report incidents through IVR (interactive voice recording, or automated calls). These incidents are registered on an online platform that enables anonymous case handling and visualises key incident indicators in real-time on a map and various infographics. This incident detection mechanism was launched in October 2018.

Since the start of this project, IPIS has been engaging intensively with various stakeholders in Tanzania to ensure that the data would support them in their respective mandates to improve the governance and impact of the mining sector.

Output

Report: Mapping artisanal and small-scale mining in northwest Tanzania: A survey on its nature, scope and impact, Hans Merket, Elard Mawala, January 2019

➡ http://ipisresearch.be/wp-content/uploads/2019/01/1901-ASM-Tanzania_web.pdf

Interactive webmap, database and graphs

Manuel Claeys Bouuaert, Emily Doerner & Stef Verheijen

➡ <http://ipisresearch.be/mapping/webmapping/tza/v1/>

Funding

Belgian Development
Cooperation



Gold Mine in Kalehe, South Kivu, DR Congo

Mapping security and human rights around artisanal mining areas in eastern DR Congo

Analysis and interactive map of artisanal mining areas in eastern DR Congo 2016-2018

In a new report and webmap, IPIS presented its updated data on armed conflict and armed interference in eastern DR Congo's artisanal mining sector. Building on extensive data, gathered over the last ten years, IPIS assesses the impact of responsible sourcing initiatives in DR Congo, designed to address armed interference in mineral supply chains. The report illustrates that responsible sourcing efforts have indeed improved the personal security of groups of artisanal miners in several provinces. However, these are relatively fragile gains and the underlying problems remain unchanged.

IPIS also establishes that most of the armed conflicts appear to be unrelated to mining activities. Armed

interference in artisanal mining often concerns illegal 'protection rackets', while armed confrontations largely take place elsewhere and for other stakes.

IPIS' data on roadblocks illustrates that artisanal mining is only one of the many sources of financing for conflict actors in eastern DR Congo. Furthermore, the research on roadblocks demonstrates that armed actors do not need to have direct control over mining sites to benefit from the artisanal mining sector. IPIS notes a consistent pattern whereby the army erects roadblocks some distance away from the mines.

Overall, IPIS sees limited impact of responsible sourcing on local development.

In order to increase sustainability, responsible sourcing efforts should increase their level of engagement towards national and local governments in eastern DR Congo. Externally controlled clean supply chains in a context of failing governance will not persist. It is a shared

responsibility to ensure that in-country authorities manage to actually control responsible sourcing.

The new report is accompanied by a new update of the IPIS webmap on artisanal mining in Eastern DR Congo.

Output

Report: Mapping artisanal mining areas and mineral supply chains in eastern DR Congo, Ken Matthysen and Peer Schouten, April 2019

➡ <http://ipisresearch.be/publication/mapping-artisanal-mining-areas-mineral-supply-chains-eastern-DR-Congo/>

Interactive webmap, Infographic, tutorial, Manuel Claeys Bouuaert, Alexandre Jaillon

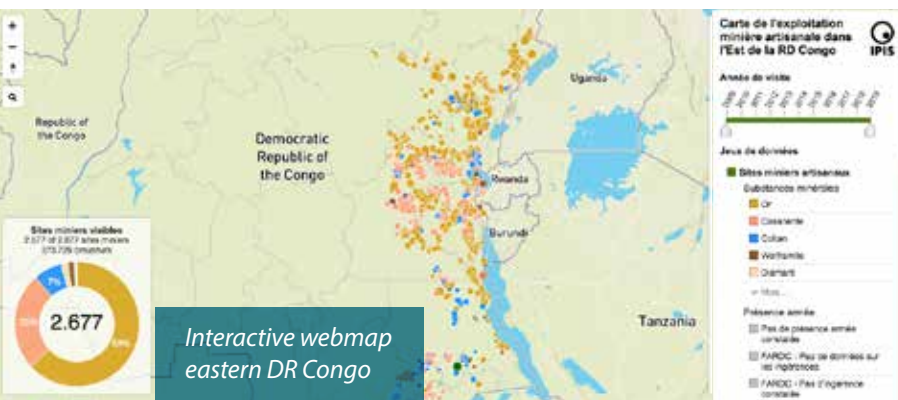
➡ <http://www.ipisresearch.be/mapping/webmapping/DR-Congo/v6/>

Report: "Everything that moves will be taxed: the political economy of roadblocks in North and South Kivu, Peer Schouten, December 2017

➡ <http://ipisresearch.be/2017/12/roadblock-rebels-ipis-maps-important-mechanism-conflict-funding-central-africa/>

Funding

International Organization for Migration (IOM) in the DR Congo through the United States Agency for International Development-USAID funded Responsible Minerals Trade (RMT) project.



Capacity building for Responsible Mineral Trade (CBRMT) – Gold in South Kivu, DR Congo

With the support of the USAID program Capacity Building for Responsible Minerals Trade, IPIS developed and implemented a methodology aimed at assessing the responsible sourcing potential of gold mining areas in South-Kivu.

IPIS conducted field missions in seven gold trading hubs and their surrounding mines in South-Kivu: Shabunda centre (Shabunda territory), Katchungu (Shabunda territory), Mapimo (Shabunda territory), Matili (Shabunda territory), Kaziba (Walungu Territory), Mukera (Fizi territory), and Nyawaronga (Kalehe territory).

In each of the hubs, IPIS collected quantitative and qualitative data on nine conditions impacting on the hubs' potential for responsible sourcing: security, accessibility, mining sites status, production, the presence of cooperatives, the behavior of local authorities, the presence of civil society, health and safety and the organization of the gold trade.

The objective of the assessment reports is to assist stakeholders in their evaluation of the responsible sourcing potential of each of these hubs. The reports scrutinizes the strengths, challenges and opportunities

of each hub and the mining sites supplying them. This cross-case analysis compares the overall potential of all seven hubs, thereby identifying important differences, trends and challenges. IPIS believes some of these findings are relevant for the whole of South Kivu.

Output

Report: Capacity building for a Responsible Minerals Trade: Evaluation of potential responsible artisanal mine site hubs: South Kivu, Guillaume de Brier, December 2018

➡ <http://ipisresearch.be/publication/capacity-building-responsible-minerals-trade/>

To explore the mine sites visited for this project on a map: access the [IPIS DR Congo webmap](#). Use the “Zones d’études spécifiques” layer and select the CBRMT project to localise the mines.

Funding



Gold mine Mbururu, Kalehe, South Kivu, DR Congo



Monitoring gold in DR Congo: Ground-based incident reporting in eastern DR Congo



Training sessions “Kufatilia” in Luntukulu, eastern DR Congo

With the support of the European Partnership for Responsible Minerals (EPRM), IPIS is setting up an independent, transparent and participatory platform for incident reporting and community empowerment in responsible sourcing in the Eastern DR Congo gold sector.

This platform contributes to improving transparency around follow-up and resolution of incidents in cooperation with relevant stakeholders. IPIS has engaged in capacity enhancement of 7 mining cooperatives through a series of trainings and follow-up visits led by CEGEMI (Centre d’Expertise en Gestion du secteur Minier).

In parallel, IPIS developed an incident reporting tool, the Gold Incident Tracker, with the support of Ulula. The Gold Incident Tracker is a tool for Congolese civil society organisations to report and monitor incidents in Eastern DR Congo related to Annex II of the OECD Guidance on Responsible Minerals Sourcing in a transparent, independent and participatory way.

Incidents linked to the production, transport and trade of minerals in South-Kivu and Ituri can be reported in a simple, free and anonymous way by sending “kufatilia” (‘to report’ in Swahili) to 0850291251 (Orange) / 0824443391 (Vodacom) / 0974729100 (Airtel). The system will automatically generate an incident questionnaire that the informant can fill in anonymously in Swahili, French or English.

Output

Progress reports: Advancing incident reporting and community participation in responsible sourcing through cooperative and CSO capacity enhancement in eastern DR Congo gold sector, Alexandre Jaillon (IPIS), Erik Gobbers (IPIS), Gabriel Kamundala (CEGEMI)

➔ <http://ipisresearch.be/publication/ground-based-incident-reporting-eastern-DR-Congo-2/>

Funding

European Partnership for Responsible Minerals (EPRM)



In cooperation with



Assessing the impact of due diligence programmes in eastern DR Congo: a baseline study

Over the past decade, various legislative and due diligence programmes (DDP) have been developed to improve mining communities' livelihoods and reduce human rights abuses in conflict affected and high-risk areas, with a special focus on the African Great Lakes region. Despite significant growth and investments in minerals certification and traceability schemes, data on the impact of due diligence for miners and communities remains scarce.

IPIS and Ulula designed and conducted a social, environmental and human rights assessment of the impact of due diligence programmes on mining communities in the eastern provinces of the Democratic Republic of Congo (DR Congo).

This report presents findings from an analysis based on a combination of field visits on mining sites and remote mobile phone surveys targeting people living in and around mining communities. The collection of primary data both at the level of mining sites and individuals living in and around the sites aims to provide a holistic picture of the impact of due diligence programmes on

social, environmental and human rights indicators in eastern DR Congo.

Output

Report and infographic: Assessing the impact of due diligence programmes in eastern DR Congo: a baseline study, Erik Gobbers, Alexandre Jaillon, Manuel Claeys Bouuaert, April 2019

➡ [http://ipisresearch.be/publication/assessing-impact-due-diligence-programmes-eastern-DR Congo-baseline-study/](http://ipisresearch.be/publication/assessing-impact-due-diligence-programmes-eastern-DR-Congo-baseline-study/)

In cooperation with Ulula



Mapping artisanal mining sites in Runde District, Zimbabwe

The Zimbabwean Lawyers Association ZELA is starting a pilot project of mapping artisanal mining sites in the Runde district (midlands province) of Zimbabwe. ZELA engaged IPIS to provide technical assistance on Mobile Data Collection tools, questionnaire design, creating a printed map and an interactive webmap. A

first training was conducted in Harare with the ZELA team in November 2018 to develop questionnaires and familiarize ZELA staff with the methodology. The project will be further implemented in 2019. IPIS will provide further guidance.

Output

Training

Funding

Zimbabwean Lawyers Association



ZELA Staff on training, Zimbabwe

Conflict Mapping

Central African Republic: A conflict mapping



Bangui la Coquette, Central African Republic

IPIs has conducted desk and field research to update its interactive webmap of the Central African Republic (CAR) and the accompanying analysis of the key security dynamics and incidents in the CAR between November 2014 and August 2018.

In a comprehensive report and webmap on the longstanding crisis in the CAR IPIs points out that access to resources remains the predominant driver of both armament and conflict in CAR. All armed groups operating in CAR are engaged in predation on one or more economic sectors. Such predation is not only a key determinant of an armed group's movements and

activities, but provides essential sustenance to its rank and file.

Two thirds of all reported incidents are characterised predominantly by violence against civilians, particularly in key pastoralists and mining locales. Roadblocks generate revenue for both the state and armed groups and roadside taxation has reached such an extent that it asphyxiates the economy. Humanitarians are increasingly targeted.

IPIs' interactive webmap and the report "Central African Republic: A Conflict Mapping" provides the reader with an overview of the actors, dynamics and the drivers of conflict in the Central African Republic.

Output

In the framework of this research an extensive report on conflict mapping and roadblocks has been published, accompanied by several maps and an infographic

Reports: Central African Republic: a conflict mapping, IPIs, September 2018

➔ <http://ipisresearch.be/publication/central-african-republic-conflict-mapping/>

République centrafricaine: cartographie du conflit, IPIs, September 2018

➔ <http://ipisresearch.be/publication/republique-centrafricaine-cartographie-du-conflit/>

Interactive webmap

➔ <http://www.ipisresearch.be/mapping/webmapping/car/v2/>

Report: The Politics of pillage: the political economy of roadblocks in the Central African Republic, Peer Schouten, Soleil Kalessopo, December 2017

➡ <http://ipisresearch.be/publication/politics-pillage-political-economy-roadblocks-central-african-republic/>

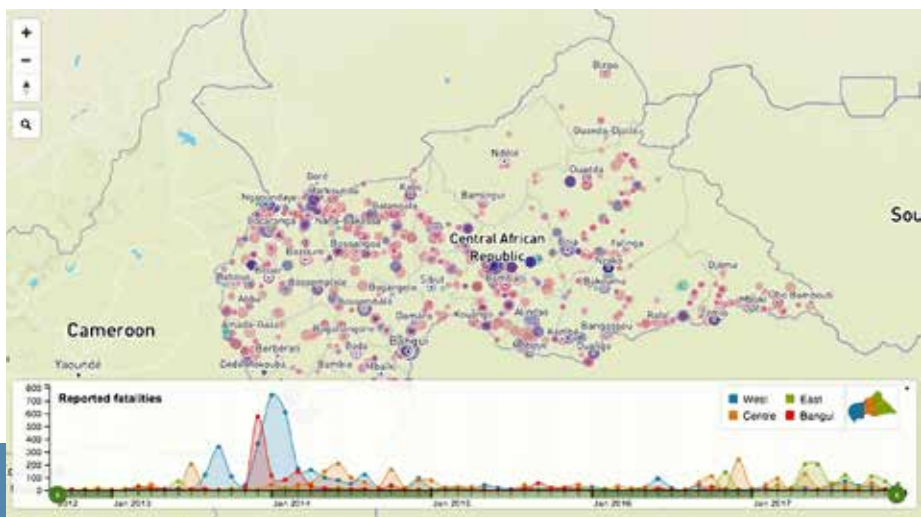
“Laissez-piller”: L'économie politique des barrières routières en République centrafricaine, Peer Schouten, Soleil Kalessopo, December 20017

➡ <http://ipisresearch.be/publication/laissez-piller-leconomie-politique-des-barrieres-routieres-en-republique-centrafricaine/>

infographic Armed Group Diagram

Funding

U.S. Department of State
Bureau of Conflict and
Stabilization Operations.



Sandstorm on the banks of the Ubangui, Central African Republic



Ouham-Pende Basemap, Central African Republic

Pastoralism in the Central African Republic conflict

Each year the annual migration of transnational transhumance through the prefecture of Ouham-Pende, in northwestern Central African Republic (CAR), uproots a deep-seated mistrust between nomadic and sedentary communities. Escalating militancy and environmental pressures in the region has only amplified these issues in recent years.

With thorough conflict mapping and analysis of the drivers and actors of conflict in the Central African Republic, IPIS has contributed to a better understanding of the Central African Republic conflict. In 2018 IPIS

started working with British NGO Concordis International in the framework of a 3-year mediation and peace building project. IPIS will be focussing on one particular activity that generates conflict on the one hand, but is fundamental for strengthening peace on the other: pastoralism.

The research aims at enhancing the understanding of transnational transhumance conflict dynamics and promote regional peace-building measures.

Output

Map

➡ <http://ipisresearch.be/publication/central-african-republic-ouham-pende-basemap/>

Funding



Mitigating conflict and reducing environmental impacts of artisanal mining in protected areas



Ngandjo wolframite mine, Kalehe territory, South Kivu bordering Kahuzi Biega National Park, DR Congo

IPIS is assisting the Wildlife Conservation Society (WCS) to investigate the Artisanal and Small-scale Mining (ASM) situation ongoing within and around Kahuzi-Biega National Park (KBNP) and the Okapi Faunal Reserve (OFR) in eastern DR Congo, with the overall goal to reduce mining inside the parks. The activities include research, development of surveys, training surveyors, conducting on the ground research and consultations with mining

stakeholders, and the development of databases, a map and a final report.

WCS is working in partnership with the Congolese Wildlife Authority - the *Institut Congolais pour la Conservation de la Nature (ICCN)* - to support the management of protected areas, while working with local communities to implement sustainable livelihood activities to contribute to both conservation and economic development. WCS is also working with community institutions to develop community protected areas that have the capacity to address challenges such as unmanaged mining inside their forests.

IPIS supports WCS to develop strategies including a potential action plan to phase out mining within the parks, decrease the impact of ASM on natural resources (including wildlife) and help to safeguard KBNP and Okapi from future mining operations within its premises.

Output

Map: Okapi wildlife reserve: illegal sourcing of gold and timber

➔ <http://ipisresearch.be/publication/okapi-wildlife-reserve-illegal-sourcing-gold-timber/>

Funding

Wildlife Conservation Society with the support of USAID and the United Nations' Great Apes Survival Partnership (GRASP)





Gold mine, Kalehe, South Kivu, DR Congo



Roadblocks and artisanal mining sites in North and South Kivu

IPIS produced a map with the location of roadblocks and artisanal mining sites in the Kivu provinces in DR Congo. The map was made by combining data from research on roadblocks in the area, and data from the database and webmap on artisanal mining sites in eastern DR Congo.

Output:

Map

➔ <http://ipisresearch.be/publication/barrieres-routieres-et-sites-miniers-artisanaux-provinces-du-nord-et-du-sud-kivu-2018/>

Arms Trade / Security

Arms and ammunitions factories in Africa

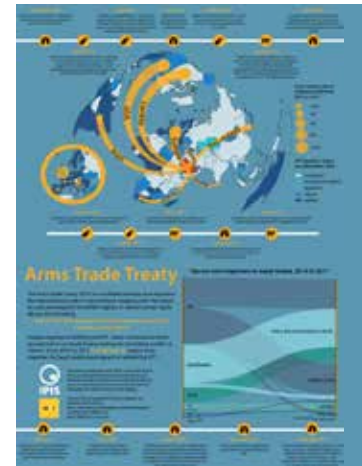
Africa's domestic defence industry remains relatively unknown. Therefore, IPIS and Omega Research Foundation compiled a database of the main entities comprising this industry: arms and ammunition production and assembly factories, companies responsible for management of said factories, as well as importing companies. This map was made to give a better overview of this industry's size and geographic layout.

Arms and ammunitions in Africa



The ATT, arms trade to Saudi Arabia and violence in Yemen

The ongoing war in Yemen has transformed into a humanitarian catastrophe. Civilian casualties, estimated in the millions, continue to rise as do the number facing severe famine. Saudi Arabia and other parties to the Yemeni conflict stand accused of repeatedly violating international humanitarian law. In spite of these allegations, countries continue to export weapons and military equipment to Saudi Arabia, in what seems to be a direct violation of the terms of the Arms Trade Treaty (ATT). IPIS developed this infographic to depict the world's largest arms exporters to Saudi Arabia, their relationship to the ATT, and the escalating violence in Yemen.



Output

Infographic – The ATT, arms trade to Saudi-Arabia and violence in Yemen , Emily Doerner, Peter Danssaert

➡ <http://ipisresearch.be/publication/infographic-att-arms-trade-saudi-arabia-violence-yemen/>

Anti-diversion

The illicit trade of small arms and light weapons remains a serious problem internationally and in many countries. To prevent the illicit trade, States call for responsible arms export control systems to be put in place. One solution is to prevent diversion, mostly limited to an assessment of the risk of diversion prior to export, and the insistence on the use of a robust stockpile management system by the recipient.

In the report “Anti-diversion measures. Real Time Locating Systems”, IPIS highlights the use of Real-Time

Locating Systems (RTLS) as a possible option to combat some forms of diversion. The newer active radio-frequency identification tags use global navigation satellite systems and the mobile telephone network to transmit their location. RTLS allows for a breadcrumb trail in the supply chain from the beginning all the way to the final recipient.

The use of RTLS to track and trace shipments should not be confused with “track and trace” method that has developed in the literature and in State practice regarding the regulation of small arms and light weapons (SALW) including firearms. IPIS highlights that, in addition to the *a posteriori* ‘track and trace’ method, it is now feasible to track and trace entire shipments of SALW and related items in real time, and thus make it possible for the authorities to take action as soon as the diversion takes place.

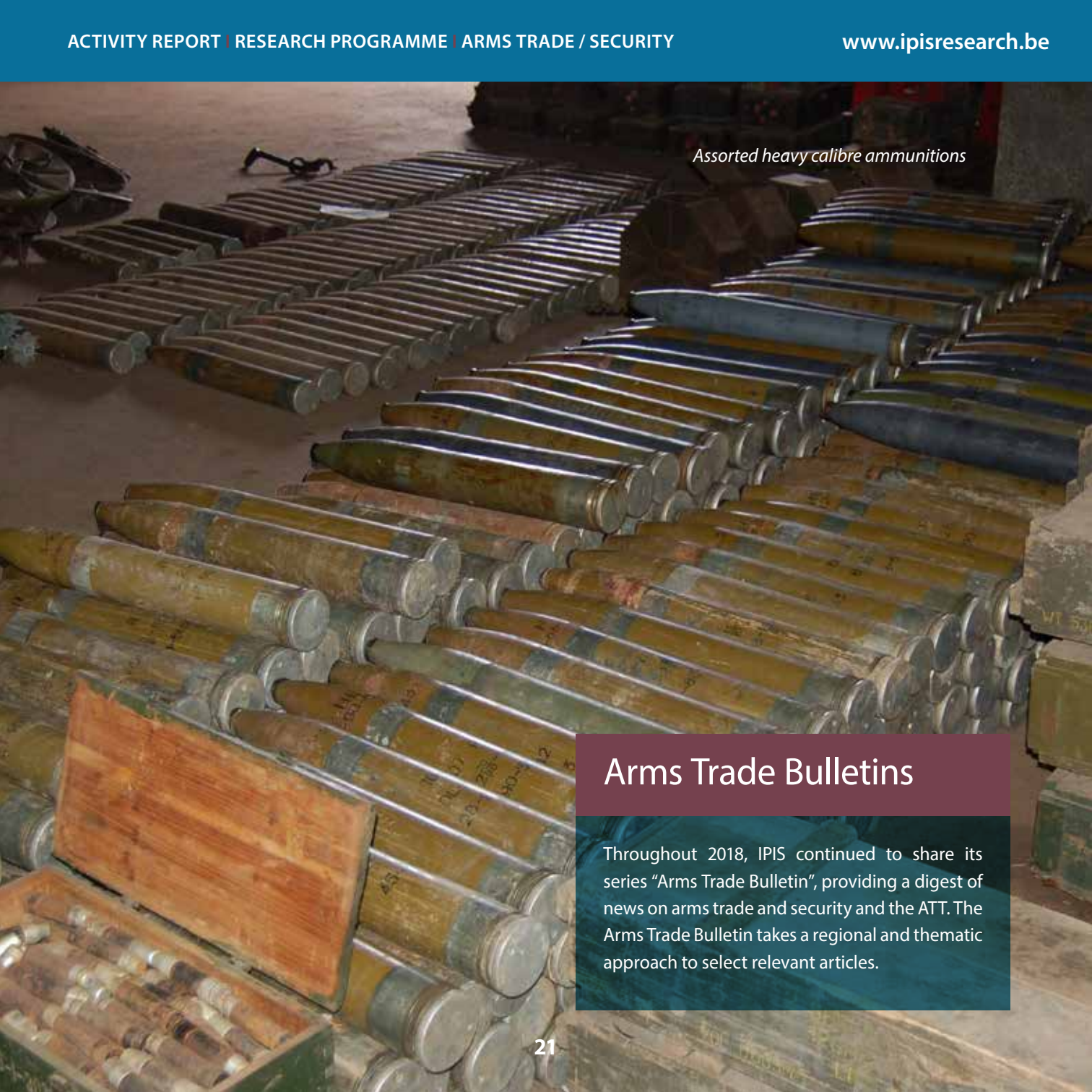
Output

The research done in 2018 was published in a 2019 report Anti-diversion measures. Real Time Locating Systems, Peter Danssaert, April 2019

➡ <http://ipisresearch.be/publication/anti-diversion-measures-real-time-locating-systems/>



Lt. Col. Brad Culligan, 838th Trans. Bn.
(© U.S. Department of Defense)



Assorted heavy calibre ammunitions

Arms Trade Bulletins

Throughout 2018, IPIS continued to share its series “Arms Trade Bulletin”, providing a digest of news on arms trade and security and the ATT. The Arms Trade Bulletin takes a regional and thematic approach to select relevant articles.

Business & Human Rights

Toolbox for business and human rights

On the 70th anniversary of the Universal Declaration of Human Rights, the Federal Institute for Sustainable Development (FIDO/IFDD) has launched the [Toolbox Human Rights](#). This toolbox is a collaboration between experts from the University of Antwerp and IPIS with valuable contributions from Belgian stakeholders.

This toolbox bundles the most important human rights conventions and regulations into one comprehensive website. This website aims to help companies, organisations and their stakeholders to easily align their policies/practices in order to prevent the violation of human rights and promote respect for human rights in all their activities. The toolbox offers hands-on online tools to help companies comply with their human rights obligations. The website is easily accessible for everyone (AnySurfer label). The toolbox is available in English, French and Dutch.

This project is part of the [National Action Plan 'Business and Human Rights'](#) that was approved by the Belgian government in July 2017.

Output

Toolbox on Business and Human Rights

➔ <https://business-humanrights.be/>

Funding

Federal Institute for Sustainable Development (FIDO/IFDD)



Improving monitoring, research and dialogue on Business & Human Rights in Tanzania



Port of Dar es Salaam, Tanzania

IPIS is implementing a project on Business & Human Rights with the Tanzanian Commission for Human Rights and Good Governance (CHRAGG) and Business and Human Rights Tanzania (BHRT). Its overall objective is to enhance national and local capacities for the protection of vulnerable groups from, the monitoring of, the reporting on, the prevention of, and ensuring accountability for corporate human rights harm in Tanzania.

The first year of the project (2018) was focused on preparing tools, methodologies and approaches to enable IPIS and its partners BHRT and CHRAGG to feed into the debate on the National Action Plan on Business & Human Rights in Tanzania and to set up an initial network of Tanzanian Business & Human Rights stakeholders including members of key civil society organisations (CSOs), the (inter-)national business community and government agencies. Dialogues on corporate human rights issues with key stakeholders took place and the current state-of-art of Business and Human Rights

challenges, opportunities, frameworks and local awareness in Tanzania was mapped. An in-depth, multi-stakeholder context analysis is continuously updated and frameworks are under development to enhance local capacities to protect, monitor, report, prevent and ensure accountability for corporate human rights harm. Foundations were also laid to update Tanzania's human rights complaint handling mechanism, which will allow for a more efficient awareness, investigation and follow-up on B&HR issues in the country.

A tangible result in 2018 was the launch of a briefing on Business & Human Rights issues in Tanzania. This quarterly briefing series presents an overview of published news, articles and reports on business and human rights in four major economic sectors in Tanzania: resource extraction, agriculture, tourism and infrastructure. With this briefing we want to inform on recent events, trends, challenges and opportunities regarding business and human rights in Tanzania.



Also in 2018, the foundations were laid for the series “Voices from Tanzania”. This series supports field-based studies which aim to draw attention to pertinent issues on business and human rights in Tanzania. Each “Voices from Tanzania” publication bundles case studies conducted by Tanzanian civil society organisations, which received editorial training and support to put their experiences on B&HR issues in writing. The first volume was published early 2019.

Output

Briefing on Business and Human Rights issues in Tanzania

➔ <http://ipisresearch.be/business-human-rights-research/quarterly-briefing-business-human-rights-tanzania/>

Voices from Tanzania

➔ <http://ipisresearch.be/home/capacity-building/voices-from-the-south/voices-from-tanzania/>

Funding

European Instrument for Democracy and Human Rights



Capacity Enhancement

Voix du Congo

Within the ‘Voices from the South’ project, IPIS launched a series of publications from partners in order to bring their work to a larger audience. IPIS has embarked on a collaboration with non-governmental organisations in eastern DR Congo and provides the necessary support (in terms of defining the subject, the composition of the article and feedback on the complete version) and a platform to disseminate their research output. The reports in no way represent IPIS’ research or views, but





provide an insight into how partners work and analyse the issues and realities they are confronted with. IPIS has already worked together with ALDECO, AEMAPRI, ASADHO, CDJP, CEADHO, CENADEP, Save Act Mine

Output

Overview of publications since 2017

➔ [http://ipisresearch.be/home/capacity-building/voices-from-the-south/voices-eastern-DR Congo/](http://ipisresearch.be/home/capacity-building/voices-from-the-south/voices-eastern-DR-Congo/)

In 2018 the following contributions were published:

- ➔ *La fraude et la contrebande minière dans le territoire de Kalehe (Sud-Kivu). CENADEP, Antenne Bukavu, Avril 2018*
- ➔ *Etude sur l'orpaillage et l'utilisation du mercure dans l'exploitation minière artisanale en Ituri, AEMAPRI, Augustin Bedidjo, May 2018*

Training workshop: field research and report writing on Business & Human Rights

In August 2018, five Tanzanian civil society organisations gathered in Dar es Salaam for a three-day training on field research and report writing. The training was part of the EU-funded project 'Improving monitoring, research and dialogue on Business & Human Rights in Tanzania' which is implemented by IPIS, the Tanzanian Commission for Human Rights and Good Governance (CHRAGG), and Business and Human Rights Tanzania (BHRT). The training aimed at strengthening the capacity of civil society organisations on how to research and report on issues related to business and human rights, in preparation of the series Voices from Tanzania on Business & Human Rights topics in Tanzania.



UA summer school, Antwerp, Belgium

IPIS workshop for summer school students on responsible sourcing

On September 6th, 2018, 30 students from the University of Antwerp 'Mine to Finger' Summer School on diamonds participated in a responsible sourcing workshop organised by IPIS. They explored the upstream context of the diamond supply chain in Central African Republic (CAR) and the DR Congo using IPIS webmaps. They engaged in a critical and nuanced discussion on various due diligence approaches.

Three day training on field research and report writing, Dar es Salaam, Tanzania



Training on Kufatilia, a new Incident Monitoring Mechanism for Gold Supply Chains

IPIS, in partnership with the Centre d'expertise en Gestion Minière (CEGEMI), launched a new incident monitoring mechanism for gold supply chains in Eastern DR Congo.

Witnesses of incidents can now report them to local CSOs by sending “kufatilia” (‘to report’ in Swahili) to 0850291251 (Orange) / 0824443391 (Vodacom) / 0974729100 (Airtel). The system will automatically generate an incident questionnaire that the informant can fill in anonymously in Swahili, French or English.

18 partner organizations, all involved in the mining sector for many years, were trained in the use of “Kufatilia”. These organizations have also been granted access to an online-platform (powered by Ulula) that hosts the database of incidents. This way, they can work together to verify, monitor and follow-up reported incidents in a transparent, independent and participative way.



Training Kufatilia, Bunia, DR Congo

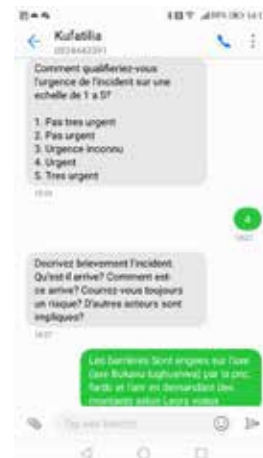
A public platform has been launched to facilitate access by local authorities and relevant stakeholders to data validated by the project partner organizations.

Output

Training workshop in Bunia, December 2018

Funding

Executed in the framework of the EPRM “Monitoring gold in DR Congo: Ground-based incident reporting in eastern DR Congo”



Building responsible supply chains for development in Africa's Great Lakes Region

IPIS is developing a database and deliver training for the International Conference of the Great Lakes Region (ICGLR). The objective is to deliver a working prototype webtool to investigate the relation between mining exports lots and the artisanal mining sites where their content originated.

New maps

Africa

Arms and ammunitions factories in Africa

This map was made to give a better overview of Africa's domestic defence industry's size and geographic layout.

DR Congo

Okapi Wildlife Reserve: illegal sourcing of gold and timber

A map of the Okapi Wildlife Reserve in DR Congo, created as a result of two mapathons (2017) focusing on illegal activities in the park.

Interactive map of artisanal mining exploitation in eastern DR Congo - 2018 update

Webmap displaying data on more than 2400 artisanal mining sites in eastern DRC and more than 800 roadblocks.

Barrières routières et sites miniers artisanaux - Provinces du Nord- et du Sud-Kivu

This map shows the location of roadblocks and artisanal mining sites in the Kivu provinces.

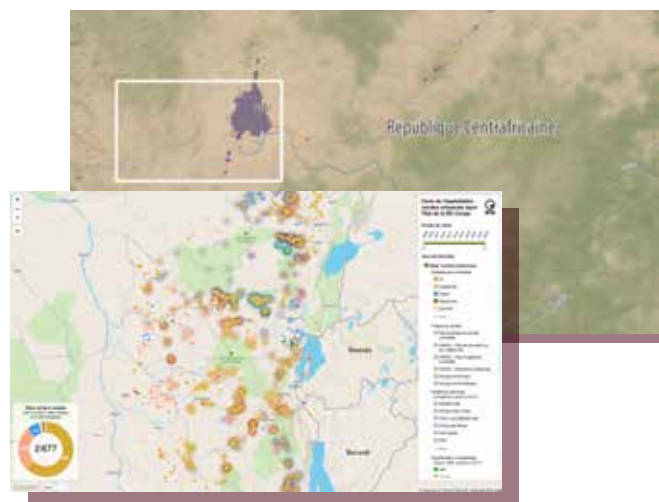
Central African Republic

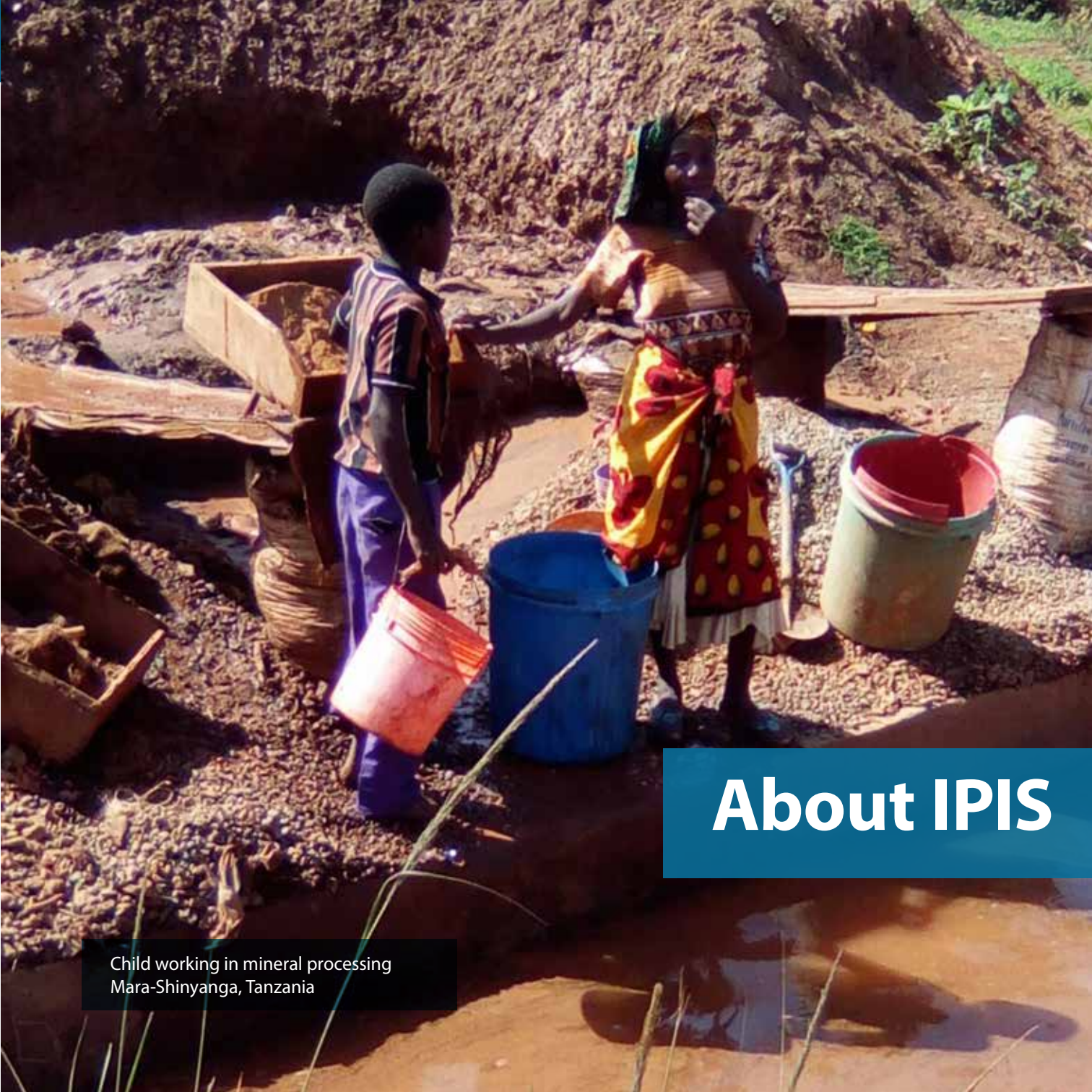
Central African Republic: a conflict mapping

IPIS' interactive webmap accompanying the report "Central African Republic: a conflict mapping" provides the reader with an overview of the actors, dynamics and the drivers of conflict in the Central African Republic.

Central African Republic - Ouham-Pende basemap

Each year the annual migration of transnational transhumance through the prefecture of Ouham-Pende uproots a deep-seated mistrust between nomadic and sedentary communities. These maps detail the towns, villages, roads, IDP camps, and natural features which have the most significant impact on pastoralists.





About IPIS

Child working in mineral processing
Mara-Shinyanga, Tanzania

Mission Statement

IPIS is an independent research institute that provides tailored information, analysis and capacity enhancement to support those actors who want to realise a vision of durable peace, sustainable development and the fulfilment of human rights.

Throughout the years, IPIS has developed a geographic focus on sub-Saharan Africa and a thematic focus on natural resources, conflict motives of armed actors, Business & Human Rights, and international arms transfers. Within this scope, IPIS strives to be a center of excellence on field based research.

The research programme Natural Resources brings in-depth research on the exploitation of natural resources. IPIS has a unique expertise on natural resources, its links to conflict and its financing, development, environment, human rights and governance.

The research programme Arms Trade & Security sheds light on facts related to the opaque international arms trade with and in our region of focus. The analysis of these data offers insights into the consequences of arms flows on conflict and underdevelopment, and recommendations to prevent the proliferation of arms in Sub-Saharan Africa. In this respect, IPIS investigates logistical chains and infrastructure that facilitate arms transfers to our focus region.

The research programme Conflict Mapping aims to map the various motives of conflict actors. A significant part of this research is devoted to the collection of reliable data on the field and its visualisation into cartographic material.

The research programme Business & Human Rights deals with corporate social responsibility (CSR) and the role of the private sector in our focus region. In the course of many years we have witnessed the potential of private companies to create wealth and promote peace, as well as conflict and inequality. The research focuses on all aspects of sustainable development, respect for human rights, and the implementation of self-regulatory and legal frameworks.

In order to ensure that our research and expertise reach as wide an audience as possible, IPIS often complements research with capacity enhancement. Increasingly, IPIS offers stand-alone capacity enhancement, designed to meet the needs and knowledge gaps identified by partners and clients.

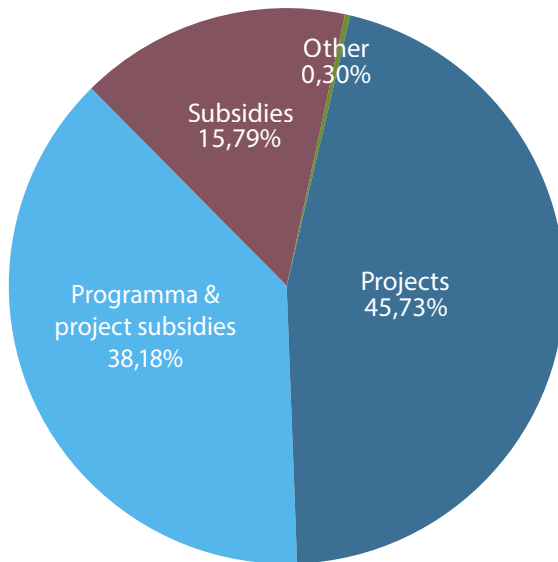
IPIS often deals with sensitive information and in handling this we pursue deontological principles such as reliability, critical sense, impartiality and check & double-check.



Gold processing site, Tanzania

Finances

Turnover

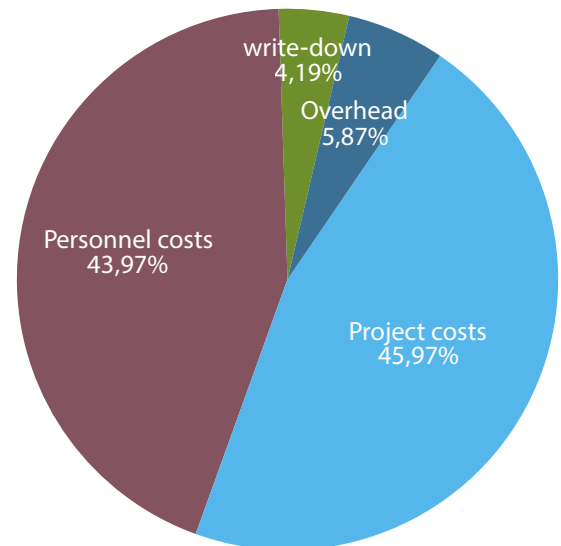


Turnover

1.441.877 €

Projects	659.398 €
Programma & project subsidies	550.491 €
Subsidies	227.635 €
Other	4.353 €


Expenses



Expenses

1.605.776 €

Overhead	94.232 €
Project costs	738.194 €
Personnel costs	706.011 €
Write-down	67.339 €

A photograph showing three men in a dark, narrow mine shaft. The man on the left is wearing a light-colored t-shirt and a blue headlamp, leaning against the earthen wall. The man in the middle is crouching, wearing a dark shirt and a blue headlamp, and holding a woven basket. The man on the right is standing, wearing a light-colored t-shirt and a blue headlamp, looking towards the camera. The shaft is dug into a reddish-brown earth.

Gold mine in Tanganyika,
DR Congo

Networks and platforms

- A-net, Library Network of the University of Antwerp
- Advisory Board for Development Cooperation Antwerp (AROSA)
- Belgian Network on Natural Resources (BNNR)
- European Partnership for Responsible Minerals (EPRM)
- European Network for Central Africa (EurAc)
- Flemish Peace Institute
- Flemish Study and Documentation Centre for non-profit organisations (VSDC)
- Kimberley Process Civil Society Coalition (KPCSC)
- NGO Federation: Flemish federation of Development NGOs
- Procura, knowledge centre for non-profit and social economy
- Provincial NGO-network of the Province of Antwerp
- Public-Private Alliance for Responsible Minerals Trade (PPA)
- Sociare, Socio cultural employers organisation

Kimberley Process

IPIS is a member of the Civil Society Coalition of the Kimberley Process Certification Scheme. Over the last couple of years, IPIS has repeatedly voiced its concerns on the functioning of the Kimberley Process. Within the Kimberley Process Civil Society Coalition (KP CSC), IPIS has been calling for meaningful reforms, both on the scope of the definition of conflict diamonds and the internal controls on governments to ensure a clean, conflict-free and legal diamond supply.

Under the EU Chairmanship of the Kimberley Process, the KP Civil Society Coalition pushed hard for reform, amongst others on changing the definition of conflict diamonds beyond the limited and outdated scope of rough diamonds financing rebel movements.

The CSC, together with industry (World Diamond Council) and Canada submitted a joint proposal to the 2018 Brussels plenary for a wider definition of conflict diamonds. This strong joint call to urgently adapt the KP to crucial concerns such as systematic and widespread violence, forced labour, the worst forms of child labour, violations of International Humanitarian Law and illicit financing of private and public security forces, met with great resistance of other participating states (Participants) at the KP Plenary, despite the commitment to reform expressed by the 2017 Brisbane Plenary. In 2019, the KP Civil Society Coalition will strongly urge

participants to observe their commitment to change in this final year of the reform agenda.

Output:

Participation in meetings of working groups and committees of the KP Certification Scheme and in the Kimberley Process Intersessional and Plenary meetings in Brussels.

Funding:

European Commission - Instrument contributing to Stability and Peace (IcSP)



European Partnership for Responsible Minerals

The European Partnership for Responsible Minerals (EPRM) is a multi-stakeholder partnership with industry, governments and civil society, established to increase the demand for responsibly sourced 3TG minerals from conflict and risk affected countries and to create better social and economic conditions for miners and local mining communities. IPIS is one of the founding members of the EPRM (2016). Participation in the EPRM is voluntary and is open to EU and non-EU member states, civil society and companies.





Gold mine Walikale, North Kivu, DR Congo

Public Private Alliance for Responsible Minerals Trade

The Public Private Alliance for Responsible Minerals Trade (PPA-RMT) is a multi-sector, multi-stakeholder initiative that works to improve due diligence and governance systems needed for ethical mineral supply chains. It responds to the global call for action to break the link between the illicit minerals trade, violence and human rights abuses, and to support projects and dialogue to improve the due diligence and governance systems needed for responsible minerals sourcing and trade. IPIS is a member of the PPA and will sit on the PPA's board in 2019.

Outreach

IPIS panel discussion on the Central African Republic

On November 22, IPIS organised a panel discussion in Brussels on the conflict in the Central African Republic (CAR). IPIS presented its report “Central African Republic: a conflict mapping” and shared its findings on the actors, dynamics and drivers of the conflict in the Central African Republic.

Terah DeJong, TetraTech expert on the Kimberley Process (KP) in the CAR addressed the audience with a critical analysis of the KP in the CAR conflict.

Both presentations were followed by a lively Q&A session with an audience of officials, researchers on CAR, journalists and IPIS' members of Board, General Assembly and staff.



Social media

Social media are IPIS' primary means to keep its audience up to date on IPIS' latest news, maps, reports and events. IPIS presents its reports and interactive webmaps in userfriendly ways and develops infographics to visualize some of the research findings. IPIS uses mailers to share news, reports, maps and a periodical arms trade briefing with subscribers.



Website

81.164
visitors



Twitter

3068
followers



Facebook

982
followers



Gold mine in Ituri, DR Congo

Library

The thematic division of IPIS' library corresponds to the key themes of our research: arms trade/security, the exploitation of natural resources in Sub-Saharan Africa, and Business & Human Rights. In addition to this, there is a separate section with reference books and general publications (on politics, history etc.).

The IPIS collection has been integrated into Anet, the library network of the University of Antwerp, connecting about twenty scientific libraries in Flanders. The catalogue contains about 2.500.000 entries. Integrating our library in this system ensures that our specialised collection of books, journals, and IPIS reports are open

to the scientific research community and interested public.

In order to provide interested audiences with the opportunity to consult our collections, IPIS provides open access to our library during visiting hours on Wednesday afternoon or after appointment if assistance of a particular researcher is required.

IPIS' researchers are responsible for building the collection. It is of vital importance for their information gathering. By permanently processing purchased and otherwise acquired publications, they can expand their expertise. In addition to that, the library is open for non-IPIS-researchers, students and stakeholders who want to expand their knowledge of our core themes and put it to use in their various work or education.

Lectures, workshops and presentations

January

- **29 - 31 January:** Training in Goma with local civil society organisations to exchange lessons learned and best practices from their experience when mapping artisanal and small-scale mining sites as well as legal and illegal roadblocks *(by Alexandre Jaillon)*

February

- **26 - 28 February:** Training on mobile data collection, tools and questionnaire design and coding at Levin Sources in the UK *(by Alexandre Jaillon)*

March

- **14 March:** Presentation at the Open Belgium conference on Open Data sharing Data Day *(by Manuel Claeys Bouuaert)*

April

- **16 April:** Presentation of the project “Monitoring Gold in eastern DRC” funded by EPRM at the OECD Forum on Responsible Minerals Supply Chains in Paris *(by Alexandre Jaillon)*

- **19 April:** OECD panel discussion on Mine site monitoring and a presentation on our mapping methodology *(by Ken Matthysen)*
- **24 April:** Data sharing workshop on Artisanal and Small-scale Mining with Tanzanian Ministry for Minerals, Dodoma *(by Hans Merket)*

May

- **2-3 May:** Data feedback workshop on Artisanal and Small-scale Mining with Tanzanian civil society surveyors, Mwanza *(by Hans Merket)*
- **3 May:** Lecture on conventional arms control and the Arms Trade Treaty for students of the Master International Relations and Diplomacy of the University of Antwerp *(by Filip Reyniers)*

June

- **8 June:** Presentation at seminar on conflict mapping and cartography, Danish Institute for International Studies, Copenhagen *(by Filip Reyniers)*
- **13 June:** Training on international frameworks for Business & Human Rights and responsible sourcing for the Kimberley Process Civil Society Coalition, Antwerp *(by Hans Merket)*



Cassiterite mine, Walikale, North Kivu, DR Congo

- **26 June:** Presentation on conflict minerals at the occasion of a thematic session on conflict minerals organized by the De Balie in Amsterdam (*by Filip Reyniers*)

August

- **7-9 August:** Training workshop on field research and report writing, Dar es Salaam (part of the EU-funded project 'Business & human rights in Tanzania' which is implemented by IPIS) (*by Mieke Thierens, Hans Merket*)

September

- **6 September:** Workshop on responsible sourcing using IPIS maps for UA summer school students (*by Manuel Claeys Bouuaert*)

October

- **31 October – 2 November:** Presentation at a the Responsible Minerals Initiative (RMI) conference on main trends, difference in iTSCI-validated and non-iTSCI-non-validated mines, statistics and challenges in eastern DRC (*by Lotte Hoex*)

November

- **5-9 November:** Training on technical assistance on Mobile Data Collection tools, questionnaire design and cartographie at the Zimbabwean Lawyers Association (ZELA) in Harare, Zimbabwe (*by Alexandre Jaillon*)
- **15 November:** Panel presentation and discussion on cobalt and conflict minerals in eastern DRC at the Quaker House in Brussels (*by Alexandre Jaillon*)
- **22 November:** IPIS report presentation "Central African Republic: a conflict mapping" on the actors, dynamics and drivers of the conflict in the Central African Republic (*by Filip Reyniers*), and a critical analysis of the Kimberley Process in the CAR conflict (*by Terah DeJong, TetraTech expert*)

Assignments 2016-2017-2018



2018

Mapping security and human rights around artisanal mining sites in eastern DR Congo: analysis and interactive map of artisanal mining areas

For IOM/USAID

Mapping the socio-economic and human rights impact of mining in northwest Tanzania

For the Belgian Development Cooperation

Improving monitoring, research and dialogue on business and human rights in Tanzania: business and human rights in Tanzania

For the EU/European Instrument for Democracy and Human Rights

Monitoring gold in DR Congo: Ground-based incident reporting in eastern DR Congo

For EPRM

Mitigating conflict and reducing environmental impacts of artisanal mining in and around protected areas

For World Conservation Society (WCS)



Cassiterite mine, Tanganyika, DR Congo

Technical assistance on Mobile Data Collection tools, questionnaire design and mapping of artisanal mining sites.

For ZELA

Development of a digital toolbox on Business and Human Rights

For the Belgian Federal Institute for Sustainable Development (FIDO/IFDD)

Capacity building for responsible mineral trade (CBRMT) – Gold in South Kivu DR Congo

For TetraTech/CBRMT

Pastoralism and conflict in the Central African Republic

For DFID/Concordis

Central African Republic: a conflict mapping

For U.S. Department of State Bureau of Conflict and Stabilization Operations

2017

'Mapping the socio-economic and human rights impact of mining in northwest Tanzania'

For the Belgian Development Cooperation

'Mapping security and human rights around artisanal mining areas in eastern DR Congo'

For the International Organization for Migration (IOM) in the DR Congo through the United States Agency for International Development-USAID funded Responsible Minerals Trade (RMT) project.

"Everything that moves will be taxed': the political economy of roadblocks in north and south kivu'

For the International Organization for Migration (IOM)

'Pillage route: l'économie politique des barrages routiers à Walikale et Masisi'

For the International Organization for Migration (IOM)

'Capacity enhancement workshop on cartography with DR Congo mining authorities'

For Cadastre Minier, SAESSCAM and Division des Mines with the support of the International Organization for Migration (IOM)

Cassiterite mine, South Kivu, DR Congo



‘Money laundering and arms trade’

For Open Society Foundation

‘E-learning modules for the implementation of the Arms Trade Treaty’

For UNSCAR

‘Mapping Conflict Motives in the Central African Republic’

For the US State Department

‘The Politics of Pillage: the political economy of roadblocks in the Central African Republic’

For the US State Department

Security and Wildlife Nexus

For AGRECO

Artisanal Gold Monitoring Pilot

For the Public-Private Alliance for Responsible Minerals (PPA)

Business and Human Rights in Tanzania

For the European Instrument for Democracy and Human rights (EIDHR)

‘Surplus and Illegal Small Arms, Light Weapons and their Ammunition: the consequences of failing to dispose and safely destroy them’

For International Action Network on Small Arms (IANSA)



2016

'Mapping Conflict Motives in The Central African Republic'

With the support of the Belgian Development Cooperation

'Mapping security and human rights around artisanal mining areas in eastern DR Congo: Analysis and interactive map of artisanal mining areas in eastern DR Congo'

For IOM, USAID, World Bank/Promines

'Database on mineral flows'

For the International Conference on the Great Lakes Region (ICGLR)

'Third Party Review of the Bisie Security Report'

For the Conflict Free Sourcing Initiative (CFSI)

'Coloured gemstones in eastern DR Congo: Tourmaline exploitation and trade in the Kivus'

For SaveActMine, with the support of the Belgian Development Cooperation

'Extractive Orders: political geography of public authority'

With the support of the Belgian Development Cooperation

'Kimberley Process – peer review mission'

For Kimberly Process, with the support of PAC

'E-learning modules for the implementation of the Arms Trade Treaty'

For UNSCAR

'Hotel Hercules. Flying CIA and UN Missions from Jamba to Phnom Penh'

For TransArms USA, with the support of the Belgian Development Cooperation

'China North Industries Corporation (Working paper 2)'

For Omega Research Foundation, with the support of the Belgian Development Cooperation

'Fatal Freight. Ships, guns and human rights abuses'

For TransArms USA, with the support of the Belgian Development Cooperation

'Optimalisation of the Flemish Arms Trade Decree'

For Amnesty International Belgium/Flemish Section, with the support of the Belgian Development Cooperation

'Accesible and interactive: new methods of data visualisation as tools for data analysis and information sharing in tranistional justice research'.

For Transitional Justice Review, with the support of the Belgian Development Cooperation



Cassiterite mine, Tanganyika, DR Congo

'Workshop on Corporate Accountability in Tanzania'

With the support of the Belgian Development Cooperation

'Human Rights and Mining in Tanzania'

For the Belgian Development Cooperation

'Workshop on Good Governance in Bangui'

With the support of the city of Antwerp

'SAESSCAM database on artisanal and small scale mining'

For Promines (World Bank)

'Cartography and artisanal mining sites inspection. Training'

For the Public-Private Alliance for Responsible Minerals (PPA)

'Het Conflict in de Centraal-Afrikaanse Republiek in kaart gebracht'

With the support of the Belgian Development Cooperation

'Voices from eastern DR Congo'

With the support of the Belgian Development Cooperation



IPIS team

Administration

Filip Reyniers, director

filip.reyniers@ipisresearch.be

Han Verleyen, communication and coordination

han.verleyen@ipisresearch.be

Anne Hullebroeck, office manager

anne.hullebroeck@ipisresearch.be

Jasleen Kaur, office assistant

jasleen.kaur@ipisresearch.be

Researchers

Peter Danssaert

peter.danssaert@ipisresearch.be

Ken Matthysen

ken.matthysen@ipisresearch.be

Fiona Southward

fiona.southward@ipisresearch.be

Lotte Hoex

lotte.hoex@ipisresearch.be

Alexandre Jaillon

alexandre.jaillon@ipisresearch.be

Guillaume de Brier

guillaume.debrier@ipisresearch.be

Hans Merket

hans.merket@ipisresearch.be

Manuel Claeys Bouuaert

manuel.claeysbouuaert@ipisresearch.be

Mieke Thierens

mieke.thierens@ipisresearch.be

Erik Gobbers

erik.gobbers@ipisresearch.be

Associate Researchers

Zacharie Bulakali Ntakobajira

Patient Lwarhoga Birindwa

Elard Mawala

Peer Schouten

Tim Van Steendam

Steven Spittaels

Brian Wood

Contact



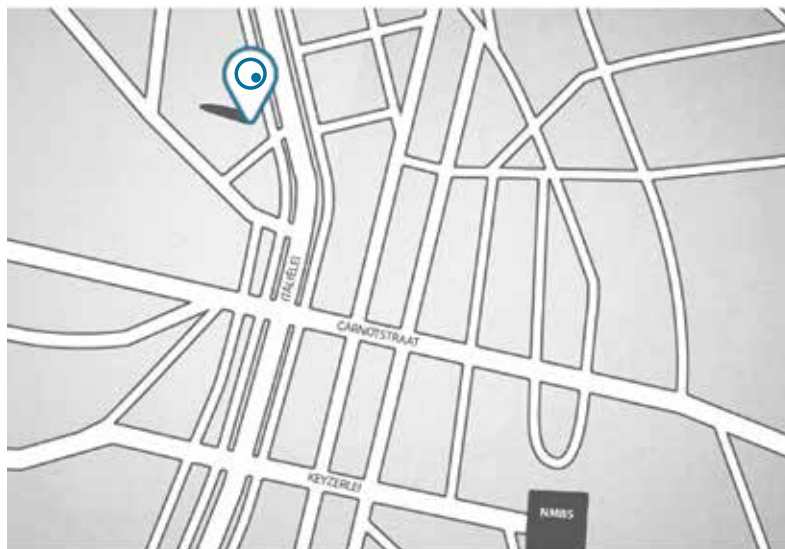
IPIS vzw

Italiëlei 98a
2000 Antwerp
Belgium

☎ + 32 3 225 00 22
✉ info@ipisresearch.be
🌐 ipisresearch.be

follow us:

🐦 [ipisresearch](https://twitter.com/ipisresearch)
📘 [ipisresearch](https://www.facebook.com/ipisresearch)



***Independent research and
capacity building for durable peace,
sustainable development
and human rights***

